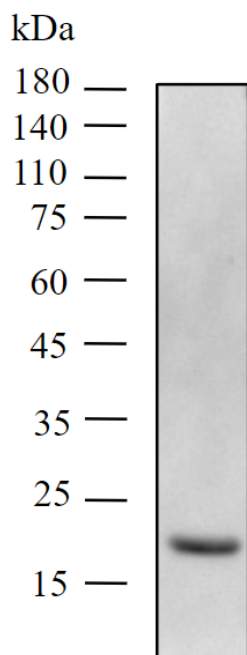


**Name:** **Infliximab Biosimilar - Research Grade [ICH4006]**

**SKU:** **ICH4006**

**Categories:** [anti-human](#), [Biosimilar Antibodies](#), [Low Endotoxin](#)



**Product price:** **\$300.00 – \$5,000.00**

## Product Details

### Bulk Infliximab Biosimilar - Research Grade

#### Product Benefits:

ichorbio's infliximab Biosimilar - Research Grade is manufactured in a cGMP compliant facility.

#### Size:

ichorbio's research grade infliximab biosimilar is available in the following sizes: 5mg, 10mg, 20mg, 50mg, 100mg ichorbio regularly manufactures bulk multi-gram amounts of our infliximab biosimilar - please contact us for pricing.

#### Target:

TNF-alpha

Clone:

n/a

Isotype:

IgG1 kappa

Other Names:

Host:

Humanized

Species Reactivity:

Human

Specificity:

Detects human TNF-alpha. This non-therapeutic antibody uses the same variable region sequence as the therapeutic antibody infliximab. This product is for research use only.

Purification Method:

This monoclonal antibody was purified using multi-step affinity chromatography methods such as Protein A or G depending on the species and isotype.

Background:

Infliximab biosimilar is a chimeric IgG1 $\gamma$  monoclonal antibody (composed of human constant and murine variable regions) specific for human tumor necrosis factor-alpha (TNF $\alpha$ ). It has a molecular weight of approximately 149.1 kilodaltons. Infliximab biosimilar is produced by a recombinant cell line cultured by suspension culture and is purified by a series of steps that includes measures to inactivate and remove viruses.

Concentration:

1.0 - 5.0 mg/ml

Formulation:

Sterile, clear, colorless, preservative-free solution with a pH of about 7.2, containing dihydrate Disodium hydrogen phosphate, sodium dihydrogen phosphate monohydrate, polysorbate 80, and sucrose.

Purity:

>95% by SDS-PAGE and HPLC

Endotoxin:

? 0.75 EU/mg as determined by the LAL method

Storage:

Infliximab Biosimilar - Research Grade is stable for at least four (4) weeks when stored sterile at 2-8°C. For long term storage aseptically aliquot in working volumes without diluting and store at -80°C. Avoid Repeated Freeze Thaw Cycles.

Applications:

Functional Assays

Application Notes:

Each investigator should determine their own optimal working dilution for specific applications.

Use:  
ichorbio's infliximab biosimilar is for research use only: it is not for diagnostic or therapeutic procedures and cannot be purchased by patients.

Isotype Control:

[Bulk Human IgG1 Isotype Control \(IB1\) \[ICH2254\]](#)

### **Additional information:**

**Size:** [1mg](#), [5mg](#), [10mg](#), [20mg](#), [50mg](#), [100mg](#)