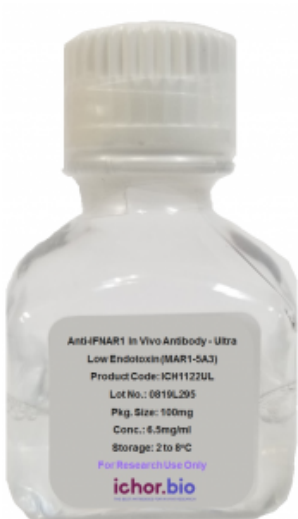


Name: Bulk Human IgG2 Isotype Control (IB2) [ICH2255]

SKU: ICH2255

Categories: [Flow Cytometry](#), [Functional Assays](#), [Isotype Controls](#), [Low Endotoxin](#)



Product price: \$375.00 – \$2,450.00

Product Details

Bulk Human IgG2 Isotype Control (IB2)

Product Benefits:

ichorbio's bulk Human IgG2 Isotype Control (IB2) is manufactured in a cGMP compliant, ISO Quality Standard 9001:2015 facility. ichorbio's low endotoxin antibodies have half the endotoxin of comparable antibodies from our [competitors](#) at less than 1.0 EU/mg. ichorbio: the best antibodies for *in vivo* research.

Target:

IgG2

Clone:

IB2

Size:

ichorbio's recombinant human IgG2 *in vivo* antibody is available in the following bulk sizes: 5mg, 25mg, 50mg and 100mg. ichorbio regularly manufactures multi-gram amounts of our human IgG2 antibody - please contact us for pricing.

Isotype:

Human IgG2

Host:

CHO cells

Species Reactivity:

Human

Specificity:

This Human IgG2 isotype control recombinant antibody has been tested against selected species' cells and tissues to assure minimal cross reactivity.

Purification Method:

This monoclonal antibody was purified using multi-step affinity chromatography methods such as Protein A or G depending on the species and isotype.

Background:

Recombinant IgG2 human antibody.

Concentration:

>5.0 mg/ml

Formulation:

This monoclonal antibody is aseptically packaged and formulated in 0.01 M phosphate buffered saline (PBS) pH 7.2 - 7.4, 150 mM NaCl with no carrier protein, potassium or preservatives added. BSA and azide free

Purity:

>95% by SDS-PAGE and HPLC

>98% by SDS-PAGE and HPLC

Endotoxin:

? 1.0 EU/mg as determined by the LAL method

? 0.75 EU/mg as determined by the LAL method

Aggregation:

Aggregation level ? 5%

Aggregation level ? 1%

Storage:

This antibody is stable for at least 4 weeks when stored at 2-8°C. For long term storage, aliquot in working volumes without diluting and store at – 20°C or -80°C. Avoid repeated freeze thaw cycles.

Applications:

Flow Cytometry, Functional Assays

Application Notes:

Each investigator should determine their own optimal working dilution for specific applications.

Use:

Products are for research use only. Not for use in diagnostic or therapeutic procedures.

Additional information:

Size: [5mg](#), [25mg](#), [50mg](#), [100mg](#)

Endotoxin Level: Low