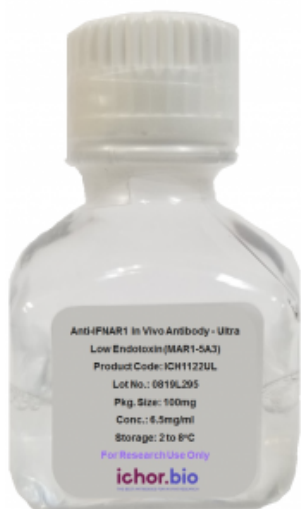


Name: Anti-Mouse CD3 In Vivo Antibody - Low Endotoxin (17A2) [ICH1039]

Sku: ICH1039

Catagories: [anti-mouse](#), [Flow Cytometry](#), [IHC \(Frozen\)](#), [ImmunoCytoChemistry](#), [Immunoprecipitation](#), [Low Endotoxin](#), [Western Blot](#)



Product price:

Product Details

Bulk anti-CD3 In Vivo Antibody - Low Endotoxin (17A2)

Bio X Cell:

ICH1039 is [up to 30% cheaper](#) for academia & non-profits and [up to 55% cheaper](#) for industry than the equivalent product from Bio X Cell (BE0002).

Product Benefits:

ichorbio's anti-CD3 In Vivo Antibody - Low Endotoxin (17A2) is manufactured in a cGMP compliant, ISO Quality Standard 9001:2015 facility. ichorbio's low endotoxin antibodies have half the endotoxin of comparable antibodies from our [competitors](#) at less than 1.0 EU/mg. If ichorbio's low endotoxin antibodies are not low enough we also offer ultra low endotoxin antibodies which have even less endotoxin (<0.75EU/mg) at an even higher purity (98% versus 95%). ichorbio: the best antibodies for *in vivo* research.

Target:

CD3

Clone:

17A2

Size:

ichorbio's 17A2 *in vivo* antibody is available in the following bulk sizes: 1mg, 5mg, 25mg, 50mg and 100mg
ichorbio regularly manufactures multi-gram amounts of our anti-CD3 17A2 clone - please contact us for pricing.

Isotype:

Rat IgG2b

Other Names:

T3/Leu-4 epsilon chain, CD3 epsilon chain, CD3e, Cd3g, T3 gamma chain, CD3 gamma chain

Host:

Rat

Species Reactivity:

Mouse

Specificity:

Anti-CD3 In Vivo Antibody - Low Endotoxin (17A2) recognizes an epitope on Mouse CD3. The 17A2 clone reacts with the epsilon and gamma chains and not delta nor zeta of CD3.

Purification Method:

This monoclonal antibody was purified using multi-step affinity chromatography methods such as Protein A or G depending on the species and isotype.

Antigen Distribution:

The CD3 complex is present on thymocytes and mature T-lymphocytes of all mouse strains tested.

Background:

CD3, is a member of the Ig superfamily and primarily expressed on T cells, NK-T cells, and at different levels on thymocytes during T cell differentiation. CD3 is composed of CD3 ϵ , δ , γ and η chains. It forms a TCR complex by associating with TCR A/ β or α / γ chains. CD3 plays a critical role in TCR signal transduction, T cell activation, and antigen recognition by binding the peptide/MHC antigen complex.

Immunogen:

gamma/delta TCR-positive T-T hybridoma D1

Concentration:

1.0 mg/ml

Formulation:

0.01 M phosphate buffered saline (PBS) pH 7.2, 150 mM NaCl with no carrier protein, potassium or preservatives added. BSA and Azide free.

Purity:

>95% by SDS-PAGE and HPLC

>98% by SDS-PAGE and HPLC

Endotoxin:

? 1.0 EU/mg as determined by the LAL method

? 0.75 EU/mg as determined by the LAL method

Aggregation:

Aggregation level ? 5%

Aggregation level ? 1%

Storage:

This antibody is stable for at least 4 weeks when stored at 2-8°C. For long term storage, aliquot in working volumes without diluting and store at – 20°C or -80°C. Avoid repeated freeze thaw cycles.

Applications:

Immunoprecipitation, Western Blot, Flow Cytometry, IHC (Frozen), Immunocytochemistry

Application Notes:

Each investigator should determine their own optimal working dilution for specific applications.

Use:

Products are for research use only. Not for use in diagnostic or therapeutic procedures.

Isotype Control:

[Rat IgG2b In Vivo Isotype Control - Low Endotoxin \[1-2\] \(ICH2243\)](#)

Antibodies against the same target:

[Anti-CD3 In Vivo Antibody - Low Endotoxin \[UCHT-1\] \(ICH1002\)](#), [Anti-CD3 In Vivo Antibody - Low Endotoxin \[HIT3a\] \(ICH1003\)](#)

Additional information:

Size: [1mg](#), [5mg](#), [25mg](#), [50mg](#), [100mg](#)

Endotoxin Level: Low